



Ida County EMS

712-364-5777

111 E State Highway 175

Ida Grove, IA 51445

Annual Report

2025

Executive summary

Ida County EMS began providing limited coverage on July 1, 2021. On November 7, 2023, Ida County voters approved an ad valorem property tax to support EMS in the County. Funding became available in fall, 2024 and Ida County EMS began providing Advanced Life Support (ALS) coverage 24/7 on January 1, 2025.

Key achievements

- **24/7 ALS Coverage:** Ida County EMS responded to 575 calls for service in 2025. This number includes only medical responses and does not capture public outreach, training or standby events.
- **Financial Responsibility:** Ida County EMS was able to carry over \$196,215 in unexpended funds for fiscal year 2025. Conservative spending and aggressively pursuing grants contributed to this.
- **Building Renovation:** Ida County EMS moved into our new home at 111 E State Highway 175 in late December 2025. Some work remains, but the location is second to none and will serve Ida County EMS and Ida Grove Ambulance for years to come.
- **EMT Class:** Ida County hosted the first ever Ida County EMS EMT course in 2025.

Personnel

Ida County EMS has a full staff of 7 individuals including 3 full-time paramedics, 3 part-time paramedics, and one full-time director (shared with the Sheriff's Office). These members provide 24/7 ALS coverage for Ida County.

Grants & Donations

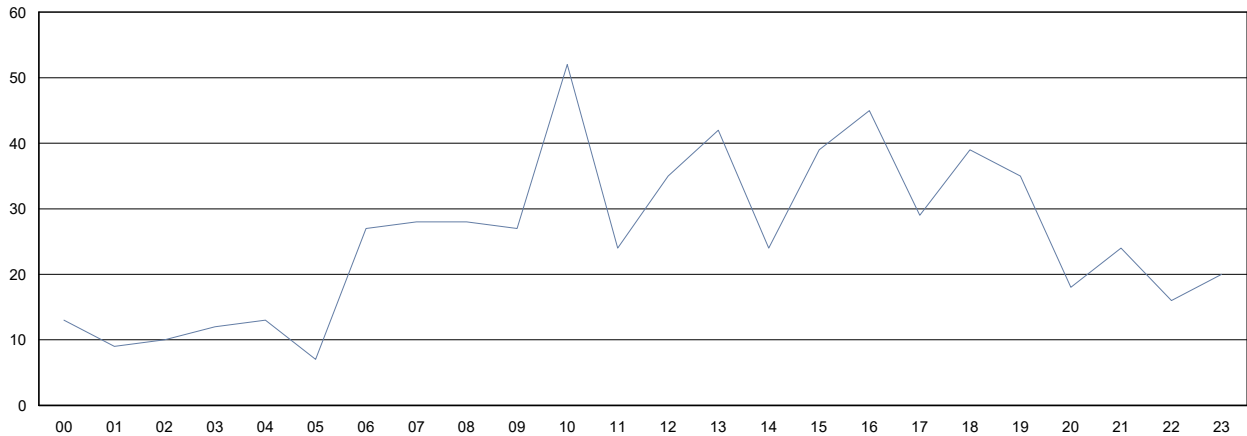
Ida County EMS received \$33,467 in donations from various donors, as well as \$41,100 in grants for equipment.

Emergency Response Statistics

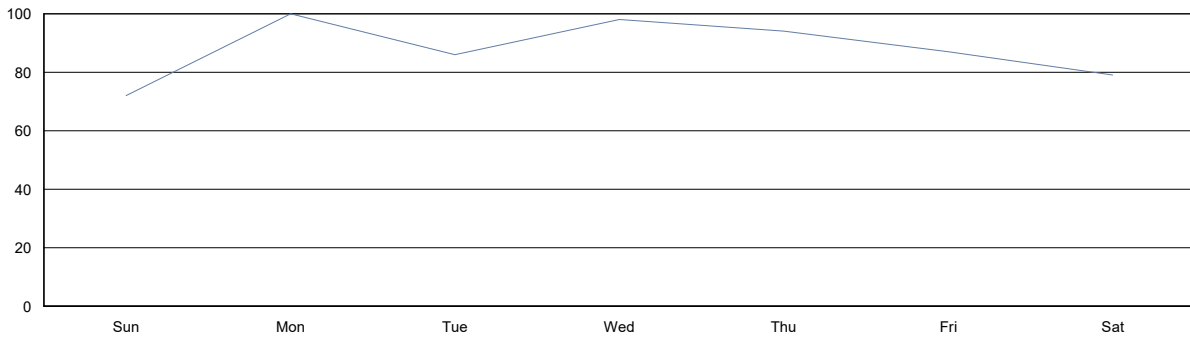
Ida County EMS responded to 575 emergency calls for service in 2025. One 135 (23%) of those calls, Ida County EMS staff provided Advanced Life Support (ALS) level care that would have otherwise been unavailable.

Top Dispatch Complaints		Calls By City Address (Inc. rural)	
Sick Person: 107	Psychiatric Issue: 25	Holstein: 219	Kiron: 3
Falls: 104	Traumatic Injury: 19	Ida Grove: 215	Schleswig: 2
Breathing Problems :53	Unknown: 17	Battle Creek: 85	Correctionville: 1
Traffic Accident: 38	Diabetic Problem: 17	Arthur: 25	Schaller: 1
Fire/Fire Alarm: 30	Seizure: 16	Galva: 20	Cushing: 1
Unconscious/Fainting: 28	Abdominal Pain: 13	Danbury: 2	Washta: 1
Chest Pain: 28	Stroke/CVA: 12	Chater Oak: 1	

Calls / Hour



Calls / DayofWeek



WHAT HAVE WE BEEN UP TO?

2025 EMS Training Conference (Continuing Education)

We hosted an EMS Day on March 1, 2025, providing 8 hours of continuing education, taught by some of our region's best instructors. 58 individuals attended this training. This training helps currently certified EMRs and EMTs maintain their certifications.



2025 EMT Course

We hosted an EMT class January-May 2025. This class was paid for by 422D (Essential EMS) funds. 9 students successfully completed the course, 4 of which have been able to gain national EMT certification.



EMS Starts with the 911 Call



Often, citizens are on scene prior to EMS arrival. Those precious moments after an emergency while waiting for an EMS response are critical to survival. In Ida County, our EMS system starts with the 911 call, where certified dispatchers ask appropriate questions and provide pre-arrival instructions to bystanders while waiting for EMS to arrive. Dispatchers employed by the Ida County Sheriff's Office have been providing this service since 2018, and Ida County EMS has a close partnership with our dispatchers.

Community Education

Ida County EMS provides community education throughout Ida County to local schools, churches, and community groups as requested. Examples include Stop the Bleed at OABCIG (taught with Kiron Fire Dept, Inc.), CPR familiarization for community groups (King Theater, Library Boards), and others. Ida County EMS was honored to be included in Project Austin at OABCIG schools. OABCIG schools is the only district west of I35 in Iowa with this designation! Ida County EMS will continue to provide these services in the future.



Building Renovation

Ida County EMS purchased a building in 2024. Renovation of the facility began early in 2025 and is expected to be completed early in 2026. This facility is serving the needs of Ida County EMS and Ida Grove Ambulance, who partnered with the Ida County EMSAC and Board of Supervisors.

This renovation added a 30x60 storage building, added an overhead door to accommodate two ambulances, concrete, an overhaul of the interior, added three bathrooms, crew quarters, and repaired structural and maintenance issues to ensure the property serves well in the future. This also allows this building to serve as a training center for Ida County EMS and other EMS agencies.



Building as Purchased



Building as of 1/1/2026

Future Issues & Planning

TIF Diversion: 24% of the funding voters approved to go to EMS in Ida County is being diverted to pay back preexisting bonds (Tax Increment Financing) unrelated to EMS. This issue has been identified and relayed to Iowa Legislature, and we are hopeful that the 2026 legislative session will fix this issue. Reclaiming those funds will allow us to improve services even further while working to ease the property tax asking in the future.

Recruitment & Initial Training: These items remain a serious challenge in EMS nationwide, and Ida County is no exception. Further work is needed to recruit new EMRs, EMTs, and drivers.

Ida County EMSAC Members

Larry Folk (Chair), Public at Large
Devlun Whiting (Vice Chair), Board of Supervisors
Corey Trucke (Secretary), Ida County EMS
Wendy Lorenzen, Member at Large
Gary Wamburg, Ida County Mayors
Dana Goodman, Ida Grove Ambulance
Shelby Ellis, Holstein Fire Department (EMS)
Jenni Sohm, Battle Creek Ambulance
Beth Schossow, Galva First Responders
Carmen Schuett, Arthur Emergency Medical Responders
Megan Wellendorf, Horn Memorial Hospital
Wade Harriman, Ida County Sheriff

Ida County Board of Supervisors

Devlun Whiting
Creston Schubert
Kyle Rohlk

Ida County EMS Staff

Dr. Albert Veltri, MD, Medical Director
Corey Trucke, AEMT, EMS Director
Jen Ryen, Paramedic, Lead Paramedic
Tonya Dupre, Paramedic
Dan Kearns, Paramedic
Allen "Bob" Welte, Part Time Paramedic
Pat Feilmeier, Part Time Paramedic
Peter Cosgrove, Paramedic



Closing Words from the EMS Director

Back in 2021, the Ida County Board of Supervisors recognized the struggling EMS system in Ida County. Working with this program as it has evolved from a one person, 45 hour per week program to a 24/7 lifesaving service has been an honor, and while we have had great success and have saved lives, work remains.

Ida County EMS and the volunteer agencies that Ida County EMS work with every day are essential. This was proven by a vote of the public, designating EMS essential in our County.

The Ida County Board of Supervisors and Ida County Emergency Medical Services Advisory Council have shown a steadfast commitment to not only maintaining our EMS system but to improving it and putting tax dollars to the best use possible. This remains my goal, as well.

We have been lucky to recruit friendly, competent and service-oriented full-time and part-time EMS staff to assist our volunteers, but we could not do what we do without the outstanding crews of volunteers from around the county. Our staff remains committed to providing the best patient care possible while helping our volunteer services maintain success.

Corey Trucke

Ida County EMS Director